

Modern Slavery Statement 2017/18

Introduction

London Metropolitan University (“LMU” or “the University”) is committed to preventing acts of modern slavery and human trafficking from occurring within its business and supply chain and imposes the same high standards on its suppliers.

LMU is one of London’s oldest universities. It has a rich history with strong educational roots dating back to 1848. The University as it is today was created in 2002 with the merging of London Guildhall University and the University of North London, the first merger between two universities in the UK.

This statement is made in accordance with section 54 (1) of the Modern Slavery Act 2015 and sets out the steps taken by LMU during the financial year ending 31 July 2018 and constitutes LMU’s slavery and human trafficking statement.

Policy

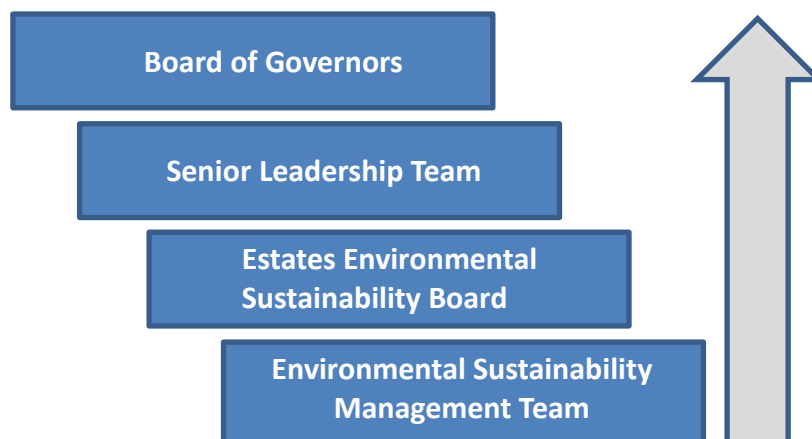
We are committed to running our organisation ethically, sustainably and responsibly. We strive to maintain high ethical principles and to respect human rights. We committed to procuring goods and services and employing people without causing harm to others and have adopted an Anti-Slavery Policy which is available on the University’s website at www.londonmet.ac.uk/about/policies/anti-slavery.

Structure of our organisation

London Metropolitan University is a UK based University. It employs 1,017 and teaches 10,295 students. It operates primarily in the UK but has partnership arrangements with providers of education in the UK and overseas. LMU has a total income of £94.3 million. Information regarding the University’s business and structure is available at www.londonmet.ac.uk/about

Our Governance

The Environmental Sustainability Management Team is responsible for leading sustainability projects and developing new ideas that reduce the environmental impact of the University. It reports into the Estates Environmental Sustainability Board which is responsible for the oversight, development and ongoing monitoring of the University environmental and sustainability policy and strategy.



Our spend categories and those that present risks of human rights abuses

The principal categories which the University deems as carrying significant risks curity, catering, cleaning, IT and laboratory consumables. The University deems the corresponding source countries to be as follows:

Category	Country
Security services	United Kingdom
Catering services	United Kingdom
Cleaning services	United Kingdom
Laboratory consumables	Malaysia, Indonesia, India, Pakistan
IT Equipment	East Asia, China, Eastern Europe, Mexico

Due diligence and compliance

The University is a member of the London Universities Procurement Consortium (LUPC), which is a non-profit professional buying organisation. LUPC is a member of Procurement England Limited (PEL), these bodies have together published a shared Sustainability Policy, to which all PEL member consortia are committed. LUPC has also published its own Slavery and Human Trafficking Statement setting out its position with regard to modern slavery and human trafficking. The University also purchases via the APUC, NEUPC, SUPC, NWUPC consortia and via Crown Commercial Services, and which have also published their own Slavery and Human Trafficking Statements.

Further actions and key goals for 2019

To supplement the actions taken this financial year to prevent slavery or human trafficking from occurring in its business or supply chains, the University shall review its Anti-Slavery Policy and other measures taken to combat modern slavery and trafficking.

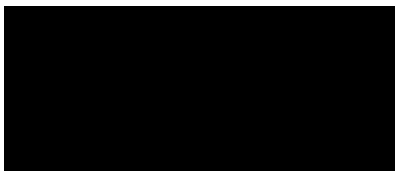
The University reaffirms its commitment to improving its understanding of supply chains and to continue to develop processes and ways of working to identify categories where the risk of modern slavery or human trafficking may exist.

The University will continue to work with its partners (especially the LUPC) to gain experience of supply chain due diligence and mitigation of the risks to human rights in our supply chains.

The University will ensure that senior managers responsible for higher risk spend categories and contracts receive Modern Slavery awareness training.

It will also continue to use attend events and use available learning material produced especially for public procurement practitioners.

Approval



Professor Lynn Dobbs
Vice-Chancellor and Chief Executive